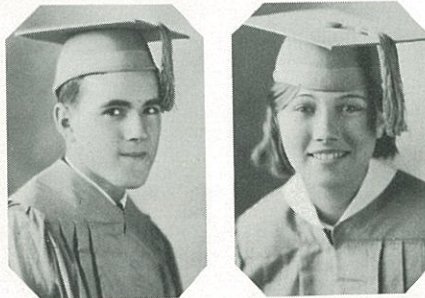


SENIORS



DON CHANEY

"Such traits are found in no one but leaders."
President of Classes '29, '30, '32; Vice-President Class '31; Football '30, '31; Basketball '30, '31, '32; Track '30, '31, '32; President of History Club '30; Athletic Club; Senior Play; Junior Play; Operetta '29, '30, '31 '32; Glee Club; Annual Staff '32; High-School Quartet.

FAYE CASS

"As merry as the day is long."
Basketball '29, '30, '31, '32; Volleyball '30, '31, '32; Tennis '31, '32; Glee Club; Spanish Club; Home Economics Club; Journalism Club; Senior Play; Junior Play; Operetta Class Officer; Cheer Leader; Pep Squad Leader.

LILLIAN MAY KOLAR

"In her own way, she makes friends that stay."
Band '32; Glee Club; President of Spanish Club '30; Home Economics Club, President '29, '31; Most Beautiful Girl of Senior Class '32.

CLEAMON PINNER

"Let the world slide, I'll not budge an inch."
Football '30, '31; Basketball '31, '32; Track '31, '32; Tennis '31, '32; Glee Club; Band '31; Spanish Club '30, '31; Science Club '29, '30; History Club '29, '30.

NEAL COOK

"Oh, why should life all labor be!"
Hi-Y Club; Track '30, '31; Football '28, '29, '30, '31; Spanish Club; Glee Club; Basketball '30, '31, '32; Operetta '30, '31, '32; Senior Play; Junior Play; Athletic Club; Most Popular Boy of Senior Class '32.

GRACIE GOBER

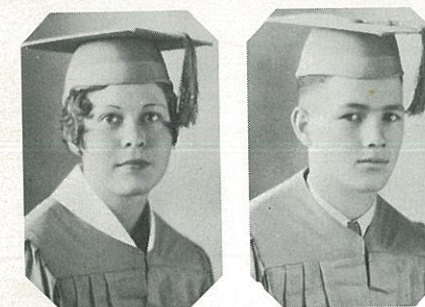
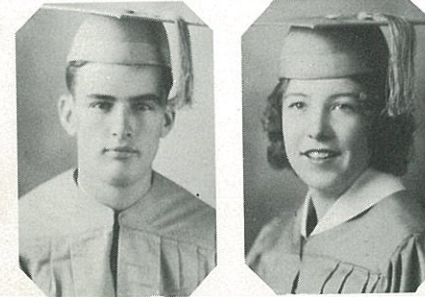
"A bundle of pep and fun;
We can't sum up the work she's done."
Basketball '31, '32; Junior Play; Senior Play; Tennis '31, '32; Pep Squad '31; Cheer Leader '32; Spanish Club; Home Economics Club; Glee Club; Operetta; Camp Fire Girls.

VIOLET NICHOLS

"She moves a goddess, and she looks a queen."
Basketball '30, '31, '32; Volleyball '30, '31, '32; Tennis '30, '31, '32; Spanish Club; Glee Club; Home Economics Club; Junior Play; Senior Club; Class Officer; Pep Squad.

TOMMY McGREW

"The 'Student Prince of Idleness';
Handles a ball with preciseness."
Football '31; Basketball '30, '31; Hi-Y Club, Secretary-Treasurer; Pep Squad Leader '30; Spanish Club; Science Club; Best-looking Boy of Senior Class '32.



SENIORS



FRANK RUTLEDGE

"Though vanquished, he would argue still."
Vice-President of Senior Class '32; Football '29, '30, '31; Track '30, '31, '32; Hi-Y '30, '31; Athletic Club; Science Club.

MARION McGREW (Mayme)

"Clever in ways and fair,
Of joy, not care, she has a full share."
Home Economics Club, President '32; Spanish Club; Basketball '32; Pep Squad, President; Most Popular Girl of Senior Class '32.



ELLEN RAY WILSON (Radie)

"In youth and beauty wisdom is but rare!"
Volleyball '29; Basketball '30; Spanish Club '29; Band '29, '30, '31; Pep Squad '32; History Club '29.

L. F. GREGORY

"Blessings on the inventor of sleep."
Hi-Y Club; Football '31; Junior Play; Senior Play; Glee Club.

A. W. ANGEL

"Things will happen; why worry?"
Tennis '31, '32; Spanish Club; Wood Working Club; Reading Club.

GERTRUDE LORENZ

"Not stepping o'er the bounds of modesty."
Camp Fire Girls; Glee Club; Pep Squad; Junior Play; Senior Play.



T. J. THIGPEN

"For every inch that is not fool is rogue."
Football '31; Track '31, '32; Basketball '31; Tennis '31, '32.

LAWRENCE RUSH . . . "Ox"

"The perennial senior."
Football '29, '30, '31; Basketball '30, '31; Track '31.

